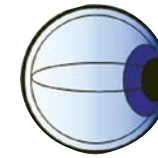


Presorted Standard
U.S. Postage
PAID
Permit #1
Oklahoma City, OK
731



RETINA CENTER OF OKLAHOMA, PLLC

SAM S. DAHR, M.D.
DIPLOMATE, AMERICAN BOARD
OF OPHTHALMOLOGY

Diseases & Surgery of the Retina & Vitreous

- Diabetic Eye Disease & Surgery
- Macular Degeneration
- Central & Branch Retinal Vein Occlusion
- Retinal Detachment Surgery
- Retinal Laser Surgery

Autoimmune & Inflammatory Eye Disease

- Uveitis of the vitreous, retina & choroid

Adult Ocular Oncology

- Uveal Melanoma

Welcome to our office!

Our practice is dedicated to providing the best, evidence-based, specialized eye care. We specialize in diagnosing and treating disorders which affect the back part of the eye, namely the retina and vitreous.

3366 NW Expressway
Physician Building D, Suite 670
Oklahoma City, OK 73112
Tel. (405) 713-4410 Fax (405) 713-4409

www.RetinaCenterOklahoma.com
or www.rcoklahoma.com

Your appointment is scheduled for:

MON	TUE	WED	THURS	FRI

at _____ a.m. / p.m.				

PRACTICE LOCATION

We are located in **Physician Building D at Integris Baptist Medical Center.**

Complimentary valet parking is located at the main **South entrance of Building D.** We encourage you to use this service (gratuity is provided; patients need not provide).

If desired, patients may self park in the NW Expressway garage that is along the north side of building D (use the West entrance of the garage).

Our telephone number is **(405) 713-4410.**

Our address is:
**3366 NW Expressway, Suite 670
Oklahoma City, OK 73112**

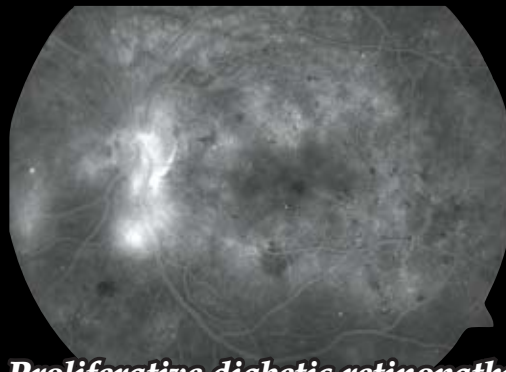
RETINA CENTER OF OKLAHOMA, PLLC
3366 NW EXPRESSWAY
PHYSICIAN BUILDING D • SUITE 670
OKLAHOMA CITY, OK 73112



www.RetinaCenterOklahoma.com
or www.rcoklahoma.com



Retinal Detachment



Proliferative diabetic retinopathy and macular edema



Wet Macular Degeneration

RETINA CENTER OF OKLAHOMA



About Dr. Dahr

Dr. Dahr is the only National Institutes of Health (NIH) trained ophthalmologist in the state of Oklahoma and one of only a handful of ophthalmologists nationwide with fellowship training in both retina and uveitis.

Dr. Dahr is board certified in ophthalmology. A native of Oklahoma, he completed his undergraduate and master's degrees at Stanford University and received his M.D. degree from the University of Oklahoma. He performed his ophthalmology residency as well as fellowship in retinal and vitreous surgery and ocular oncology at the University of Cincinnati and the Cincinnati Eye Institute in Ohio. He completed fellowships in medical retina (diabetic eye disease and macular degeneration) and in uveitis (autoimmune eye disease) at the National Institutes of Health (NIH) in Washington, D.C.

About Your Care

We take an evidence-based and patient-centered approach to your care. First, we examine your eyes thoroughly. In the office, we may then perform:

- fluorescein angiogram, where we inject a vegetable dye (not iodine based) in your arm vein and use a special camera to take pictures of the back of the eye.
- OCT (optical tomography) to generate a topographic map of the retina.
- ultrasound of the eye.

Recommended **Treatments** for your eye may include **laser** and/or **special injections**, both of which are performed in the office. For uveitis patients we may advise special medicines to be taken by mouth, in conjunction with consultation with a primary care doctor.

For patients with retinal detachment, diabetic hemorrhage, or other conditions, we may recommend **surgery**. For retinal surgery the patient typically comes to the hospital or surgery center in the morning and then goes home after surgery, with a followup visit in the office the next day.

Making An Appointment

To make an appointment, please call **(405)713-4410** during our office hours, which are Monday through

Friday, 8:30 a.m. to 5:00 p.m. However, if you are having an urgent problem, please call. We can almost always see you that same day.

Your First Visit

Please be prepared to spend at least 2 hours during your initial visit. This comprehensive evaluation will include an ocular and medical history, as well as a pupil dilation. The actual exam takes only about 15 minutes. If special tests or a procedure are required, your visit may last longer. We recommend a friend or family member drive you home as some patients find driving difficult after a pupil dilation.

Forms to fill before first visit

To make your visit to the office more efficient, we ask that you visit our website at www.rcoklahoma.com to download forms to fill concerning your demographic information and medical history. We ask that you then bring the completed forms with you. If you do not have internet access please call and we will mail you the forms.

Insurance and Fees

We accept Medicare, Medicaid, and almost every insurance plan in Oklahoma. Our fees are based on the Medicare fee schedule. For a list of insurance plans as well as an explanation of our fees see www.rcoklahoma.com and click "insurance."

Internet: www.RetinaCenterOklahoma.com or www.rcoklahoma.com